

Getting to Gunn

Details, maps, and school commute safety information on our “Getting to Gunn” web page at <http://www.gunn.pausd.org/transportation>

Bus

- **VTA Bus:** Subsidized bus passes are available each month in the SAC. See “Getting to Gunn” transportation page for route, schedule and fare information.
- **PAUSD Buses:** Routes J and Z serve Los Altos Hills, Palo Alto Hills, and Stanford at a subsidized rate. Visit <https://www.pausd.org/student-services/transportation> or call 329-3982. First come, first served.

Biking & Walking

- Off-road paths offer bicyclists and walkers convenient and low-traffic entrances on the neighborhood edges of Gunn campus.
- Find walk/bike routes and bike parking location maps and information at <http://www.gunn.pausd.org/transportation>
- Pedal for Prizes volunteers greet bikers with prizes and treats on random mornings!

On-Campus Drop-Off

- Only carpools may drop off passengers at the curb by the office (the first allowable left). No waiting at the curb to pick up someone; please park and meet them instead!
- To drop off one student, continue back, turn left before the gym, and left again at the covered drop off area; then complete the loop back to the main driveway.

Parking Permits Are Required

- Students: Parking permits are available for purchase to juniors and seniors. Parking for carpools is cheaper and closer in.
- Visitors: All vehicles on campus need permits, even in the visitor spots by the front office. Visitors must stop by the office first thing to get a free parking permit.



For everyone’s health and safety, Gunn administration and PTSA recommend that students bike, walk, ride the bus or carpool to school as often as possible.

Safe Routes to School Tips

Share the road safely with all other users, no matter how you choose to get to and from school.

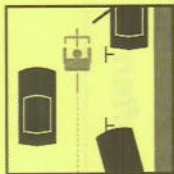
Use extra caution near younger students walking or biking to school.

Obey adult crossing guards. They are there to help everyone cross congested intersections safely.

Bike Safely



Be predictable. Obey all stop signs and traffic signals. Never ride wrong way. The best way to avoid crashes as well as traffic tickets is to follow the same rules of the road as apply to car drivers.



Be alert. Watch out for drivers turning left or right, or coming out of driveways. Avoid car doors opening in front of you by riding out of the door zone. Yield to pedestrians.



Wear your helmet and buckle it every time. It's the law. To best protect your brain, your helmet must fit properly: snug and level on your head, just above your eyebrows.



Be visible. Use a bright headlight and taillight at night.

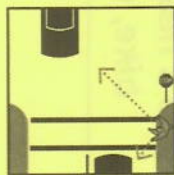
Avoid texting, phone calls, or music while biking.

Walk or Skate Safely



check all directions

Be alert. Look for cars coming from all directions before entering the street - including from behind you.



Cross at corners and crosswalks. This is where drivers expect pedestrians.

Don't assume drivers see you. Make eye contact before crossing intersections.

Share the Path Safely



Pedestrians have the right of way on walkways and paths. Give an audible warning when you pass on your bicycle.

Keep to the right and pass on the left.

Drive Safely

Slow down and use extra caution in school zones and along commute routes! Signal your turns and yield to pedestrians.

Help reduce traffic congestion near schools by carpooling with a neighbor whenever possible. Avoid the last minute rush.

Obey adult crossing guards and "No Right Turn on Red" signs posted at designated school intersections. This allows students to cross safely when no cars are turning through crosswalks.

Avoid making U-turns and other unsafe maneuvers that put other road users at risk.

When dropping off or picking up your student, **follow school guidelines** and always ensure that he/she exits or enters the car from the curb side.

Never double park or block access ramps. Never park or stop where prohibited.

Avoid texting, phone calls and other distractions when driving.

Report ALL crashes involving students to the PAPD at 329-2413, even if there are no injuries. Also contact the school office to fill out the PAUSD incident report.

We welcome volunteers to help with Safe Routes to School events and programs!

Contact your school PTA or email us at:

City of Palo Alto Safe Routes to School

saferoutes@cityofpaloalto.org

650.329.2156

For more information, see

www.cityofpaloalto.org/saferoutes

<http://saferoutes.paloaltopta.org>



Palo Alto Council
PTA
everychild. onevoice.