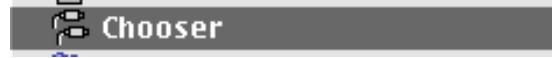


# Connecting To Henry (At School) Mac OS 9

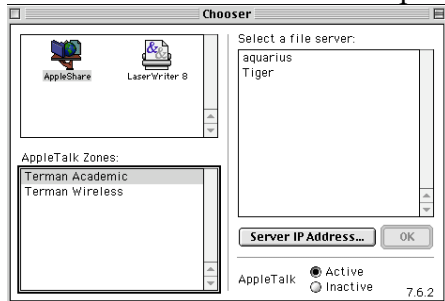
To log into the file storage server, Henry, click on the apple menu on the top left corner of your screen.



Slide down and click on "Chooser"



This chooser window should open up



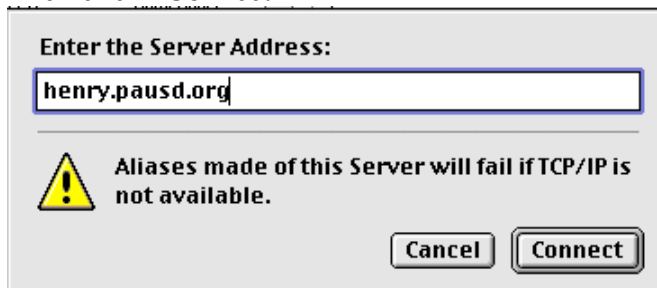
Click on Appleshare



Next click on "Server IP Address"

Server IP Address...

A blank address box should open up, type in "henry.pausd.org"  
Then click "Connect"



The connect to file server window should now be open, delete the name on the screen and type your user ID & password

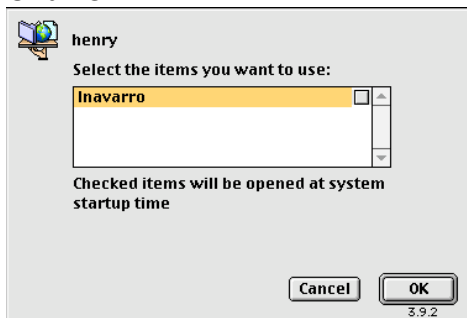


## Connecting To Henry (At School) Mac OS 9

A window similar to this should appear with your user ID.

**\*\* DO NOT check the box to the right.**

Click OK



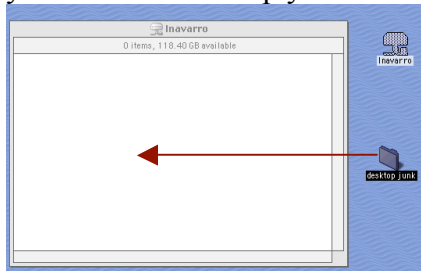
Your desktop should now have this server icon.



Double-click to open your locker on Henry and add or remove items.

To add items to your locker you must drag them from their location into this icon.

**\*\* (Be sure to keep your locker neat and organized, create folders within your locker to separate your classes and help you locate specific items)**



Drag the icon into the trash when you are done to eject your locker.

